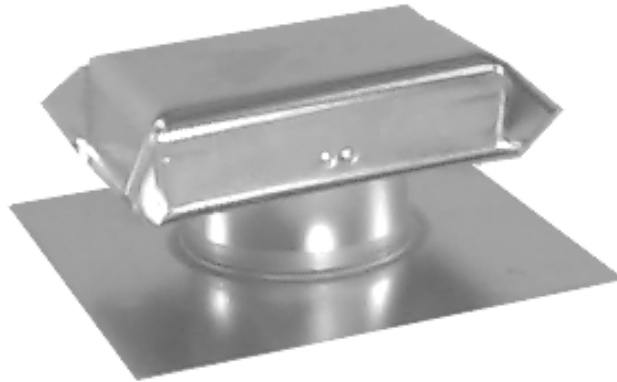


# J-VENTS

---



## DESIGN PROVIDES MAXIMUM FREE AREA FOR GREATER EFFICIENCY

- ◆ For pitched or flat roofs.
- ◆ Provides low silhouette.
- ◆ Open on all sides for better air flow.
- ◆ Helps eliminate moisture within buildings.
- ◆ Quality constructed in galvanized, aluminum or painted.
- ◆ #8 insect screen installed.



---

***FRESH AIR MANUFACTURING CO.***

*Technologies in Ventilation*

649 N. Ralstin St., Meridian, ID 83642 \* (208)884-8931 \* 800-234-1903 \* FAX: (208)884-8943

# J-VENTS

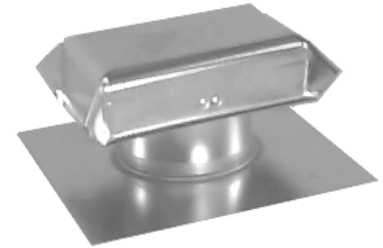


## OPTIONS:

- ◆ Greater clearance between flange and hood. (“G” dimension)
- ◆ Larger flange sizes.
- ◆ Curb mount models.
- ◆ Special materials (i.e., copper, stainless steel, etc.).



OS Model



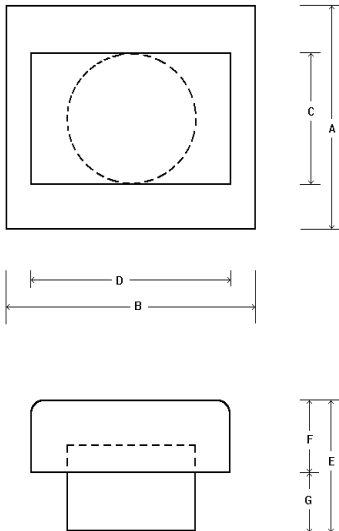
Standard



with Stem



with Clearance



DRAWINGS ARE NOT TO SCALE

J-VENT DETAIL								
Size	A	B	C	D	E	F	G	Free Area in sq. in. **
3"	8.5"	8.5"	3"	5"	3.25"	1.5"	1.25"	7
4"	8.5"	8.5"	4"	6.5"	3.5"	1.75"	1.75"	12.6
6"	12"	15"	6"	9.5"	5"	3"	2"	28.3
7"	12"	15"	7"	11"	5"	3.25"	1.75"	38.5
8"	15"	15"	8"	13.5"	5.25"	2.75"	2.5"	50.3
9"	15"	18"	9"	14"	5.75"	4"	1.75"	63.6
10"	15"	20"	10"	16"	6.5"	4.5"	2"	78.5
12"	20"	24"	12"	19"	7.5"	5"	2.5"	113.1
14"	22"	24"	14"	19"	7"	4.25"	2.75"	153.9

\*\* Free area is calculated without screen.



**FRESH AIR MANUFACTURING CO.**  
Technologies in Ventilation