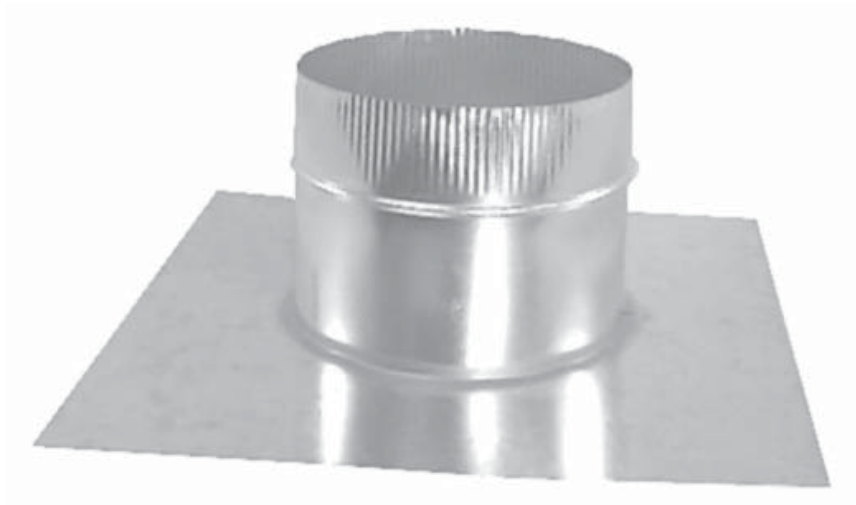


# ROUND VENT BASE



## **FOR USE WITH TURBINE VENTS, GLOBE VENTS, WIND DIRECTIONAL CAPS AND OTHER VENTING APPLICATIONS**

- ◆ Available in flat, saddle or pitched (sloped) styles.
- ◆ Large flange for easy installation and leakage protection.
- ◆ Heavy gauge galvanized materials.
- ◆ All weatherproof seams.
- ◆ Chain dampers available when specified.



---

***FRESH AIR MANUFACTURING CO.***

*Technologies in Ventilation*

649 N. Ralstin St., Meridian, ID 83642 \* (208)884-8931 \* 800-234-1903 \* FAX: (208)884-8943

# ROUND VENT BASE

---

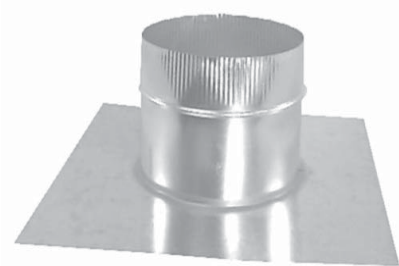


## OPTIONS:

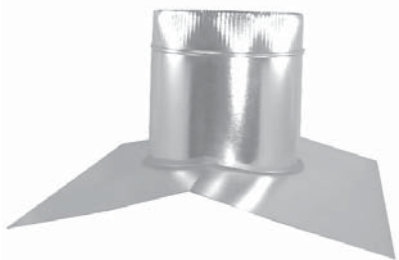
Available in other materials (i.e. copper, aluminum, etc.).

Chain damper available.

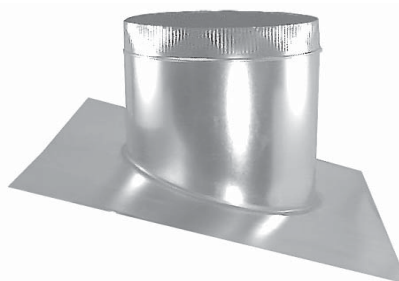
Curb mount (customer provides dimensions).



FLAT BASE - used for flat roofs. No pitch or slope measurements needed.



SADDLE BASE - used on ridge (peak) of roof. Need slope of roof on both sides. This measurement should be given in standard roof slope measurement. (i.e., 1/12, 5/12, etc. ).



PITCHED BASE - used on roofs with any slope and placed below the ridge line. Must provide slope measurement on side of roof where it is to be placed using standard roof measurements (as above).



---

***FRESH AIR MANUFACTURING CO.***  
*Technologies in Ventilation*