



FAMCO

"Technologies in Ventilation"



CATALOG
PRODUCT
CATALOG
PRODUCT
CATALOG
**PRODUCT
CATALOG**
LIST PRICES - JULY 2011
PRODUCT
CATALOG
PRODUCT

INDEX 

TERMS & CONDITIONS

TERMS OF SALE:

DISCOUNTS: Discounts offered by FAMCO are for approved accounts only. Discounts are a percentage off list price from list price book. All special orders are priced net and receive no discounts.
FAMCO will not accept returns of special ordered products.

TERMS: Terms are NET 30 days from date of invoice.
Payment to be made to FAMCO, 649 N. Ralstin St., Meridian, ID 83642.
There will be an interest charge of 1 1/2% per month (18% APR) added on all accounts over 30 days.

FAMCO reserves the right to change prices without notice

DELIVERY TERMS:

FREIGHT: All orders should try to reach freight free minimums if possible. All orders below freight free minimums will be prepaid and added to invoice unless specified otherwise. See page 3 for freight allowances.

ROUTING: Orders will be shipped the most cost effective way. Any additional freight cost over standard routing will be invoiced to the customer.

We cannot be liable for shipping delays not within our control.

ORDERING INFORMATION:

CATALOG: Please use our catalog numbers and description when ordering to avoid confusion or delay.

MATERIALS: If a special material is needed, please specify when ordering.

BIDS & QUOTES: All price quotes are good for a maximum of 30 days unless stated otherwise in writing.

MINIMUMS: There will be a minimum order charge of \$35.00 for any order of less than \$35.00 net.

MISC: Extra catalogs, price sheets, ad materials and samples will be provided at the option of FAMCO.

TERMS & CONDITIONS

GUARANTEE:

GUARANTEE: All products are guaranteed to be free of defective material or workmanship for a period of one year from date of delivery. During the guarantee period, if any parts prove defective, they will be repaired or replaced free of charge at factory option; if, upon receipt of written authorization they are delivered prepaid to the factory. This guarantee does not, however, cover any damage caused by neglect of lubrication, accident or overload, improper installation, nor does it cover the cost of repairs made or attempted outside the factory without written authorization from FAMCO.

Correction of any verified defects by repair or replacement shall constitute fulfillment of the guarantee. Customer must pay all freight cost associated with repair or replacement.

ERRORS & OMISSIONS:

E & O's While every effort has been made to ensure the accuracy of the information supplied herein, FAMCO (Fresh Air Manufacturing Company) cannot be held responsible for any errors or omissions.

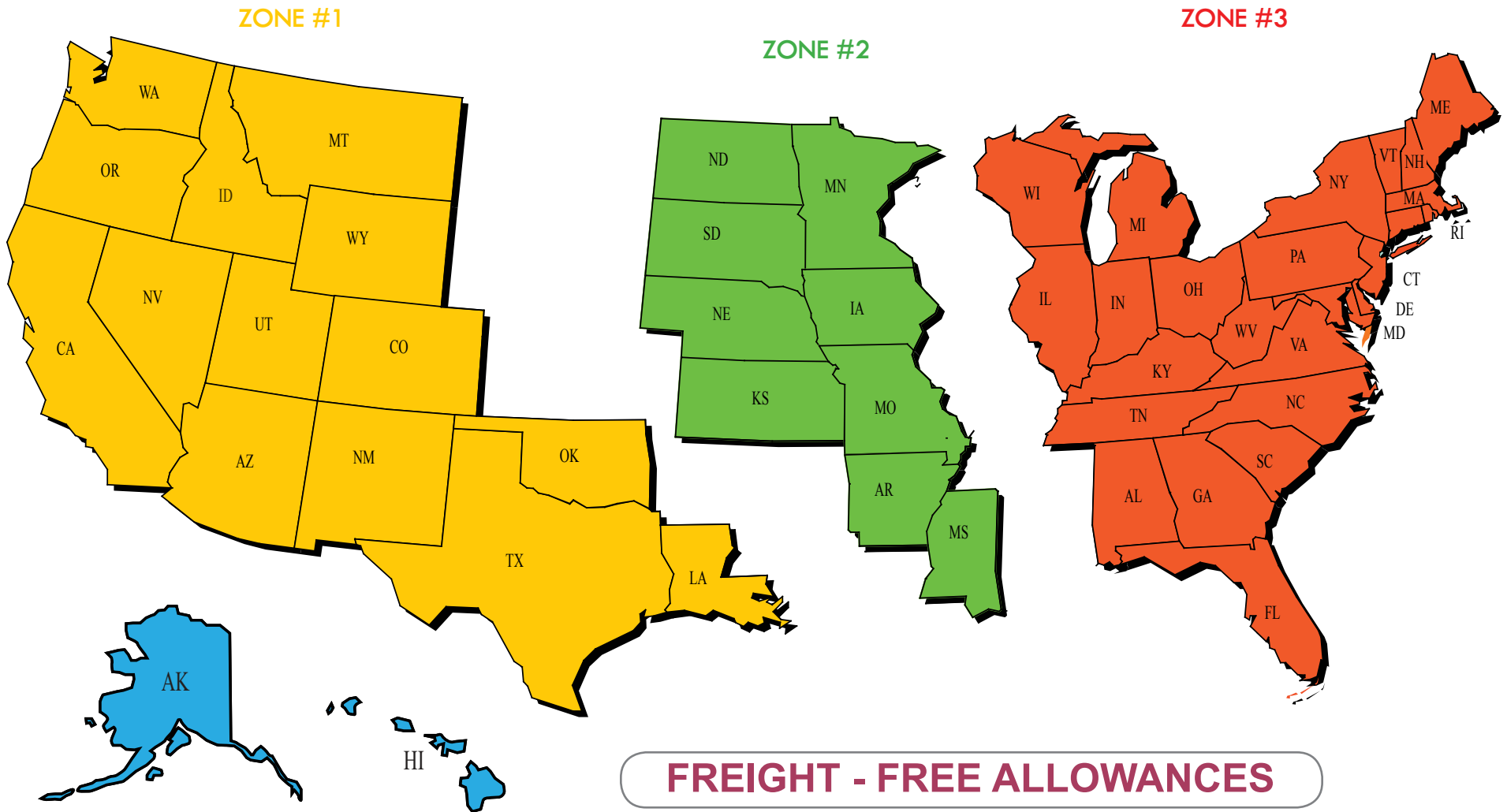
ABOUT US:

FAMCO Established in 1989, Fresh Air Manufacturing Company (FAMCO) headquartered in Meridian Idaho is one of the Pacific Northwest's largest manufacturers and distributors of air ventilation and specialty building products.

FAMCO currently manufactures and distributes from three plants located in Meridian, Nampa and Caldwell Idaho to thousands of wholesalers across the United States and Canada. FAMCO products are used in HVAC to Roofing, and Building Materials. Our quality starts with using the finest raw materials available and having our experienced team following lean manufacturing principles. Under Lean Manufacturing, every procedure is measured, analyzed and checked for quality, efficiency and customer satisfaction.

It is the veteran management team, industry knowledge and desire to always improve that separates FAMCO from others. We pride ourselves on the guarantee of quality ventilation and building products at FAMCO.

ZONE MAP



ZONE #4 - Includes:
AK, HI & CANADA

FREIGHT - FREE ALLOWANCES

ZONE # 1	\$1,000.00
ZONE # 2	\$1,500.00
ZONE # 3	\$2,000.00
ZONE # 4	F.O.B. Meridian, Idaho

CONTENTS / INDEX

TERMS & CONDITIONS

TERMS OF SALE	2
DELIVERY TERMS	2
ORDERING INFORMATION	2
GUARANTEE	3
ERRORS & OMISSIONS	3
ABOUT US	3
ZONE MAP	4
FREIGHT ALLOWANCES	4
CONTENTS / INDEX	5

ROOF VENTS

J-VENT GALVANIZED	6
J-VENT with SHAKEBASE	6
J-VENT with 6" CLEARANCE	6
J-VENT with EXTENSION	7
LOUVERED ROOF VENT - 50 sq.in	7
PLASTIC ROOF VENT - 50 sq.in. NET FREE AREA	7
PLASTIC BATHROOM / KITCHEN EXHAUST VENT	8
BATHROOM / KITCHEN EXHAUST VENT - GALV	8
BATHROOM / KITCHEN EXHAUST VENT - PAINTED	8
GLOBE VENTS	9
ROOF VENT WITH 38 Sq. In. NET FREE AREA	9
ROUND VENT BASES	10 - 11
CONTINUOUS RIDGE VENT	11
ROOF CAP ADAPTOR	11

WALL VENTS

HOODED WALL VENTS W/REVERSIBLE DAMPER	12
RECTANGULAR WALL VENT	12
HOODED WALL VENTS	13 - 14
PLASTIC WALL VENTS	14
HD HOODED WALL VENT	14

LOUVERED GABLE VENTS

LOUVERED VENT with /ROUND TRANSITION	15
GABLE VENTS (FLUSH, FOB, REC)	15
ROUND & HALF ROUND GABLE VENTS	16

SOFFIT & FOUNDATION VENTS

CONTINUOUS SOFFIT VENT	17
LOUVERED FOUNDATION & SOFFIT VENTS	17
UNDER EAVE VENTS	18

HVAC DAMPERS

MOTORIZED DAMPERS	19
POWER OPEN & CLOSE DAMPERS	20
BACK DRAFT DAMPERS	20
PRESSURE RELIEF DAMPERS	21
MULTI BLADE DAMPER	21

CHIMNEY CAPS & ADAPTORS

WIND DIRECTIONAL CAPS	22
WIND CAP ADAPTORS	22
SQUARE TILE ADAPTORS	22
VACUUM CAPS	23
SQUARE BASE VACUUM CAPS	23
CONE TOP CAPS	24
UNIVERSAL CAPS	24

PIPE FLASHING

PIPE FLASHING - ADJ / STANDARD PITCH	25
PIPE FLASHING - ADJ / STEEP PITCH	25
PIPE FLASHINGS - FLAT PITCH	26
CRICKET FLASHING	26
PIPE FLASHINGS with NEOPRENE COLLAR	26

HVAC ACCESSORIES

FLUE CAPS & PLUGS	27
TAPERED 3-PIECE REDUCER	27
INCREASER / REDUCER	28
PLUG REDUCER	28
DIFFUSER BOX	29
STORM COLLARS	29
VENT COLLARS	30
NAIL PLATES	30
VENT SCREEN	30
FURNACE FILTER RACK	31
STUCCO RING for WALL VENTS	31

JOIST POCKET LINER

JOIST POCKET LINER	32
--------------------------	----

COPPER PRODUCTS

BATH & KITCHEN EXHAUST VENTS	33
J-VENTS	33
ROOF VENTS	33
CONE TOP CAPS	33
UNIVERSAL CHIMNEY CAPS	34
VACUUM CAPS	34
LOUVERED GABLE VENTS	34
RECTANGULAR WALL VENTS	35
HOODED WALL VENTS	35

CONTACT

ROOF VENTS

J-VENT

SIZE	MODEL #	LIST PRICE	CTN QTY	PAINTED		LIST PRICE
3"	* JV3	10.88	50	JV3BR	JV3BK	15.65
4"	* JV4	11.16		JV4BR	JV4BK	17.96
6"	JV6	15.51	12	JV6BR	JV6BK	22.04
7"	JV7	16.46		JV7BR	JV7BK	22.99
8"	JV8	18.23	6	JV8BR	JV8BK	24.63
9"	JV9	19.73		JV9BR	JV9BK	25.99
10"	JV10	27.35		JV10BR	JV10BK	33.19
12"	JV12	33.73		JV12BR	JV12BK	39.18
14"	JV14	38.77		JV14BR	JV14BK	47.48

*** OTHER SIZES AVAILABLE, CALL FOR PRICING - * 3" & 4" ONLY AVAILABLE WITH PINCHED CORNERS ***



J-VENT with SHAKEBASE

SIZE	MODEL #	LIST PRICE	CTN QTY	PAINTED		LIST PRICE
3"	* JV3SB	15.78	36	JV3SBBR	JV3SBBK	22.58
4"	* JV4SB	15.78		JV4SBBR	JV4SBBK	22.58
6"	JV6SB	18.64	6	JV6SBBR	JV6SBBK	24.22
7"	JV7SB	20.00		JV7SBBR	JV7SBBK	24.76
8"	JV8SB	22.59		JV8SBBR	JV8SBBK	27.49
9"	JV9SB	24.99		JV9SBBR	JV9SBBK	23.63
10"	JV10SB	29.39		JV10SBBR	JV10SBBK	28.85
12"	JV12SB	37.14		JV12SBBR	JV12SBBK	47.55
14"	JV14SB	43.26		JV14SBBR	JV14SBBK	51.97

*** OTHER SIZES AVAILABLE, CALL FOR PRICING - * 3" & 4" ONLY AVAILABLE WITH PINCHED CORNERS ***



J-VENT with 6" CLEARANCE

SIZE	MODEL #	LIST PRICE	CTN QTY	PAINTED		LIST PRICE
3"	* JV3CL	15.51		JV3CLBR	JV3CLBK	22.31
4"	* JV4CL	15.51		JV4CLBR	JV4CLBK	22.31
6"	JV6CL	19.87		JV6CLBR	JV6CLBK	25.45
7"	JV7CL	20.81		JV7CLBR	JV7CLBK	25.57
8"	JV8CL	22.59	6	JV8CLBR	JV8CLBK	27.49
9"	JV9CL	24.09		JV9CLBR	JV9CLBK	31.33
10"	JV10CL	31.57		JV10CLBR	JV10CLBK	38.57
12"	JV12CL	37.95		JV12CLBR	JV12CLBK	48.36
14"	JV14CL	45.98		JV14CLBR	JV14CLBK	54.69

*** OTHER SIZES AVAILABLE, CALL FOR PRICING - * 3" & 4" ONLY AVAILABLE WITH PINCHED CORNERS ***



ROOF VENTS

J-VENT with EXTENSION

SIZE	MODEL #	LIST PRICE	CTN QTY	PAINTED		LIST PRICE
3"	* JV3X	15.24		JV3XBR	JV3XBK	20.69
4"	* JV4X	15.24		JV4XBR	JV4XBK	20.69
6"	JV6X	19.32		JV6XBR	JV6XBK	24.77
7"	JV7X	20.27		JV7XBR	JV7XBK	25.71
8"	JV8X	21.91		JV8XBR	JV8XBK	27.35

*** * 3" & 4" ONLY AVAILABLE WITH PINCHED CORNERS ***



JVX

LOUVERED ROOF VENT with SLANT BACK

SIZE	MODEL #	COLOR	CTN QTY	LIST PRICE
50 Sq. In. Opening	LRV50	GALVANIZED	6	19.10
	LRV50BK	BLACK		22.62
	LRV50BR	BROWN		22.62
	LRV50WH	WHITE		22.62
	LRV50WG	WOOD GRAY		22.62



LRV50

PLASTIC ROOF VENT with 50 sq. in. Net Free Area

FREE AREA	MODEL #	COLOR	CTN QTY	LIST PRICE
50 Sq. In. Net Free Area	FA50BK	BLACK	12	12.93
	FA50BR	BROWN *		12.93
	FA50DBR	DARK BROWN		12.93
	FA50WH	WHITE *		12.93
	FA50WG	WOOD GRAY		12.93
	FA50GR	GRAY *		12.93

*** * SPECIAL ORDERED COLOR, PLEASE ALLOW 2 WEEKS TO SHIP ***



FA50

ROOF VENTS

PLASTIC BATHROOM / KITCHEN EXHAUST VENT with SCREEN + DAMPER & REMOVABLE STEM

SIZE	MODEL #	COLOR	CTN QTY	LIST PRICE
4"	BVDS4BK	BLACK	12	13.06
	BVDS4BR	BROWN *		13.06
	BVDS4DBR	DARK BROWN		13.06
	BVDS4WH	WHITE *		13.06
	BVDS4WG	WOOD GRAY		13.06
	BVDS4GR	GRAY *		13.06
6"	BVDS6BK	BLACK	12	16.88
	BVDS6BR	BROWN *		16.88
	BVDS6DBR	DARK BROWN		16.88
	BVDS6WH	WHITE *		16.88
	BVDS6WG	WOOD GRAY		16.88
	BVDS6GR	GRAY *		16.88

*** *SPECIAL ORDERED COLOR, PLEASE ALLOW 2 WEEKS TO SHIP ***



BVDS

BATHROOM / KITCHEN EXHAUST VENT with SCREEN + DAMPER - GALVANIZED

MATERIAL	SIZE	without BOTTOM EXTENSION			with BOTTOM EXTENSION		
		MODEL #	LIST PRICE	CTN QTY	MODEL #	LIST PRICE	CTN QTY
GALVANIZED	4"	BK4	21.09	1	BK4X	23.95	1
	6"	BK6	25.19		BK6X	31.25	
	8"	BK8	37.95		BK8X	42.18	
	10"	BK10	79.70		BK10X	83.93	



BK

BATHROOM / KITCHEN EXHAUST VENT with SCREEN + DAMPER - PAINTED

MATERIAL	SIZE	without BOTTOM EXTENSION			with BOTTOM EXTENSION		
		MODEL #	LIST PRICE	CTN QTY	MODEL #	LIST PRICE	CTN QTY
PAINTED BLACK	BLACK						
	4'	BK4BK	22.52	1	BK4XBK	25.31	1
	6'	BK6BK	29.92		BK6XBK	35.84	
	8'	BK8BK	39.59		BK8XBK	44.22	
	10'	BK10BK	94.80		BK10XBK	98.40	
BROWN							
PAINTED BROWN	4"	BK4BR	22.52	1	BK4XBR	25.31	1
	6"	BK6BR	29.92		BK6XBR	35.84	
	8"	BK8BR	39.59		BK8XBR	44.22	
	10"	BK10BR	94.80		BK10XBR	98.40	



BKX

ROOF VENTS

GLOBE VENT

SIZE	MODEL #	LIST PRICE	CTN QTY	SIZE	MODEL #	LIST PRICE	CTN QTY
GALVANIZED				STAINLESS STEEL			
3"	GBV3	12.25	12	N/A	N/A	CALL FOR PRICING	1
4"	GBV4	12.25		4"	GBV4SS		
5"	GBV5	14.42		N/A	N/A		
6"	GBV6	17.96		6"	GBV6SS		
7"	GBV7	20.41	4	7"	GBV7SS		
8"	GBV8	22.45		8"	GBV8SS		
9"	GBV9	25.57		N/A	N/A		
10"	GBV10	32.51		10"	GBV10SS		
12"	GBV12	42.58	3	12"	GBV12SS		
14"	GBV14	54.82	2	14"	GBV14SS		
16"	GBV16	80.95		N/A	N/A		
18"	GBV18	110.10	1				
20"	GBV20	127.73					
22"	GBV22	150.79					
24"	GBV24	179.88					
30"	GBV30	382.60					
34"	GBV34	447.27					
36"	GBV36	584.17					



GBV

ROOF VENT with 38" sq. in. Net Free Area

COLOR	MODEL #	LIST PRICE	CTN QTY
GALVANIZED	JVO38	19.78	6
BROWN	JVO38BR	19.78	
BLACK	JVO38BK	19.78	
GRAY	JVO38GR	19.78	
COPPER	JVO38CU	CALL FOR PRICING	



JVO38

ROOF VENTS

ROUND VENT BASE - FLAT

SIZE	MODEL #	LIST PRICE	CTN QTY
4"	FB4	10.08	1
6"	FB6	10.58	
8"	FB8	13.36	
10"	FB10	22.73	
12"	FB12	31.62	
14"	FB14	42.20	
16"	FB16	50.26	
18"	FB18	60.34	
20"	FB20	80.36	
22"	FB22	102.16	
24"	FB24	108.41	



FB

ROUND VENT BASE - PITCHED

SIZE	MODEL #	LIST PRICE	CTN QTY
4"	PB4	20.01	1
6"	PB6	20.01	
8"	PB8	23.54	
10"	PB10	36.05	
12"	PB12	46.93	
14"	PB14	60.54	
16"	PB16	74.55	
18"	PB18	87.48	
20"	PB20	104.81	
22"	PB22	131.01	
24"	PB24	142.85	



PB

*** PLEASE SPECIFY ROOF PITCH WHEN ORDERING ***

ROOF VENTS

ROUND VENT BASE - SADDLE

SIZE	MODEL #	LIST PRICE	CTN QTY
4"	SB4	20.01	1
6"	SB6	20.01	
8"	SB8	23.54	
10"	SB10	36.05	
12"	SB12	46.93	
14"	SB14	60.54	
16"	SB16	74.55	
18"	SB18	87.48	
20"	SB20	104.81	
22"	SB22	131.01	
24"	SB24	142.85	

*** PLEASE SPECIFY ROOF PITCH WHEN ORDERING ***



SB

CONTINUOUS RIDGE VENT

SIZE	COLOR	MODEL #	LIST PRICE (per L/ft)	CTN QTY
4"	GALVANIZED	CRV4	6.80	40 L/ft
8"		CRV8	13.33	20 L/ft
PAINTED				
4"	BLACK	CRV4BK	7.30	40 L/ft
	WHITE	CRV4WH	7.30	
	BROWN	CRV4BR	7.30	
8"	BLACK	CRV8BK	14.74	20 L/ft
	WHITE	CRV8WH	14.74	
	BROWN	CRV8BR	14.74	

*** ALL CRV MADE IN 10' PIECES ***



CRV

ROOF CAP ADAPTOR

SIZE	MODEL #	LIST PRICE	CTN QTY
3.75"	FB3.75 - No Crimp	6.47	1
7.75"	FB7.75 - No Crimp	12.69	
9.75"	FB9.75 - No Crimp	14.43	
11.75"	FB11.75 - No Crimp	15.29	

*** OTHER SIZES AVAILABLE, CALL FOR PRICING ***



FB NO CRIMP

WALL VENTS

HOODED WALL VENT with SCREEN and REVERSIBLE DAMPER GALVANIZED

SIZE	MODEL #	LIST PRICE	CTN QTY
4"	RDWV4	24.49	1
5"	RDWV5	24.49	
6"	RDWV6	27.84	
7"	RDWV7	27.84	
8"	RDWV8	32.63	
10"	RDWV10	42.04	
12"	RDWV12	44.76	

*** OTHER SIZES AVAILABLE, CALL FOR PRICING ***



RDWV

HOODED WALL VENT with SCREEN and REVERSIBLE DAMPER ALUMINIUM

SIZE	MODEL #	LIST PRICE	CTN QTY
4"	RDWV4A	29.35	1
5"	RDWV5A	29.35	
6"	RDWV6A	33.92	
7"	RDWV7A	42.43	
8"	RDWV8A	42.43	
10"	RDWV10A	49.63	
12"	RDWV12A	53.97	

3 1/4" x 10" - HOODED RECTANGULAR WALL VENT with DAMPER

MATERIAL	with SCREEN			without SCREEN		
	MODEL #	LIST PRICE	CTN QTY	MODEL #	LIST PRICE	CTN QTY
24 ga. POWDER COAT BLACK	WV310HBK	27.40	10	N/A	N/A	N/A
24 ga. POWDER COAT BROWN	WV310HBR	27.40	10	N/A	N/A	N/A
GALVANIZED	WV310S	23.53	6	WV310	21.77	6
ALUMINIUM	WV310SA	26.81		WV310A	25.03	
BROWN	WV310SBR	26.81		WV310BR	25.03	
WHITE	WV310SWH	26.81		WV310WH	25.03	
BLACK	WV310S	26.81		WV310BK	25.03	



WV310



WV310HBK

WALL VENTS

HOODED WALL VENT - ALUMINIUM

SIZE	with DAMPER	with SCREEN	LIST PRICE	CTN QTY	DAMPER & SCREEN	LIST PRICE	CTN QTY
3"	DWV3A	SWV3A	14.15	12	SDWV3A	14.83	12
4"	DWV4A	SWV4A	15.37		SDWV4A	16.87	
5"	DWV5A	SWV5A	17.01		SDWV5A	17.83	
6"	DWV6A	SWV6A	18.09		SDWV6A	20.00	
7"	DWV7A	SWV7A	20.41		SDWV7A	22.04	
8"	DWV8A	SWV8A	23.53	8	SDWV8A	25.31	8
10"	DWV10A	SWV10A	39.32	1	SDWV10A	42.45	1
12"	DWV12A	SWV12A	47.34		SDWV12A	50.02	
14"	DWV14A	SWV14A	58.24		SDWV14A	60.92	



WVA

HOODED WALL VENT - GALVANIZED

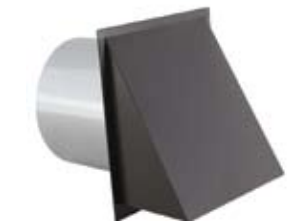
SIZE	with DAMPER	with SCREEN	LIST PRICE	CTN QTY	DAMPER & SCREEN	LIST PRICE	CTN QTY
3"	DWV3	SWV3	14.15	12	SDWV3	14.83	12
4"	DWV4	SWV4	15.37		SDWV4	16.87	
5"	DWV5	SWV5	17.01		SDWV5	17.83	
6"	DWV6	SWV6	18.09		SDWV6	20.00	
7"	DWV7	SWV7	20.41		SDWV7	22.04	
8"	DWV8	SWV8	23.53	8	SDWV8	25.31	8
10"	DWV10	SWV10	39.32	1	SDWV10	42.45	1
12"	DWV12	SWV12	47.34		SDWV12	50.02	
14"	DWV14	SWV14	58.24		SDWV14	60.92	



WV

HOODED WALL VENT - PAINTED (Black, Brown, White)

SIZE	with DAMPER	with SCREEN	LIST PRICE	CTN QTY	DAMPER & SCREEN	LIST PRICE	CTN QTY
3"	DWV3P	SWV3P	22.04	12	SDWV3P	22.66	12
4"	DWV4P	SWV4P	23.13		SDWV4P	24.56	
5"	DWV5P	SWV5P	24.77		SDWV5P	26.39	
6"	DWV6P	SWV6P	25.71		SDWV6P	28.97	
7"	DWV7P	SWV7P	28.03		SDWV7P	30.25	
8"	DWV8P	SWV8P	29.65	8	SDWV8P	31.38	8
10"	DWV10P	SWV10P	46.12	1	SDWV10P	49.09	1
12"	DWV12P	SWV12P	53.60		SDWV12P	57.90	
14"	DWV14P	SWV14P	64.50		SDWV14P	68.80	



WVBR

*** PLEASE SPECIFY COLOR (BK, BR, WH) WHEN ORDERING ***

WALL VENTS

HOODED WALL VENT with SPRING LOADED DAMPER, GASKET and SCREEN

SIZE	MATERIAL	MODEL #	LIST PRICE	CTN QTY
4"	ALUMINIUM	WVE4A	21.06	12
4"	GALVANIZED	WVE4	21.06	
4"	BLACK	WVE4BK	25.76	
4"	BROWN	WVE4BR	25.76	



HD HOODED WALL VENT with SPRING LOADED DAMPER, GASKET and SCREEN

SIZE	MATERIAL	MODEL #	LIST PRICE	CTN QTY
6"	24 ga. BLACK Powder Coat	WVEBH6BK	38.34	12
6"	24 ga. BROWN Powder Coat	WVEBH6BR	38.34	
6"	24 ga. GALVANIZED Powder Coat	WVEBH6	33.30	
6"	ALUMINIUM	WVEBH6A	35.80	



PLASTIC WALL VENTS

SIZE	WHITE ITEM #	BROWN ITEM #	LIST PRICE	CTN QTY
with HOOD and DAMPER				
3"	UFH3WH	UFH3BR	3.58	10
4"	UFH4WH	UFH4BR	3.78	
with MOVABLE LOUVERS				
3"	LH3WH	LH3BR	3.22	16
4"	LH4WH	LH4BR	3.22	
5"	LH5WH	LH5BR	5.13	8
6"	LH6WH	LH6BR	6.27	14
7"	LH7WH	LH7BR	7.91	8
8"	LH8WH	LH8B	16.67	12
with FIXED LOUVERS				
4"	AI4WH	AI4BR	4.63	14
6"	AI6WH	AI6BR	6.05	10
7"	AI7WH	AI7BR	6.86	6
8"	AI8WH	AI8BR	16.75	8



LOUVERED GABLE VENTS

LOUVERED GABLE VENT with ROUND TRANSITION

SQUARE TO ROUND	MODEL #	LIST PRICE	CTN QTY
8" x 8" to 6" round	GVT886	37.01	N/A
8" x 8" to 8" round	GVT888	37.01	
12" x 8" to 6" round"	GVT1286	38.91	
12" x 8" to 8" round	GVT1288	38.91	
12" x 10" to 8" round	GVT12108	40.13	
12" x 10" to 10" round	GVT121010	40.13	
12" x 12" to 8" round	GVT12128	41.36	
12" x 12" to 10" round	GVT121210	41.36	
12" x 12" to 12" round	GVT121212	41.36	

*** OTHER SIZES ALSO AVAILABLE with FLUSH MOUNT, RECESSED MOUNT and FLANGE ON BACK ***



GVT

LOUVERED GABLE VENTS

SIZE	MODEL #	LIST PRICE	CTN QTY
WIDTH x HEIGHT	R - RECESSED MOUNT, 3/4" back from front		
12" x 12"	GV1212R	23.53	N/A
12" x 18"	GV1218R	29.65	
14" x 18"	GV1418R	37.01	
14" x 24"	GV1424R	37.01	
WIDTH x HEIGHT	F - FLUSH MOUNT, flange on front		
12" x 12"	GV1212F	21.23	N/A
12" x 18"	GV1218F	26.66	
14" x 18"	GV1418F	33.33	
14" x 24"	GV1424F	33.33	
WIDTH x HEIGHT	FOB - FLANGE ON BACK		
12" x 12"	GV1212FOB	23.53	N/A
12" x 18"	GV1218FOB	29.65	
14" x 18"	GV1418FOB	37.01	
14" x 24"	GV1424FOB	37.01	

*** ALL GV UNITS COME WITH 1/4" SCREEN UNLESS ORDERED SPECIFICALLY ***

*** OTHER SIZES AVAILABLE, CALL FOR PRICING ***



GV

LOUVERED GABLE VENTS

ROUND LOUVERED GABLE VENTS

SIZE	MODEL #	LIST PRICE	CTN QTY
RECESSED MOUNT			
12"	GVR12R	CALL FOR PRICING	N/A
14"	GVR14R		
16"	GVR16R		
18"	GVR18R		
20"	GVR20R		
24"	GVR24R		
30"	GVR30R		
36"	GVR36R		
42"	GVR42R		
48"	GVR48R		
FLUSH MOUNT			
12"	GVR12F	CALL OR PRICING	N/A
14"	GVR14F		
18"	GVR18F		
24"	GVR24F		
30"	GVR30F		

*** OTHER SIZES AVAILABLE, CALL FOR PRICING ***



GVR

HALF ROUND LOUVERED GABLE VENTS

SIZE	MODEL #	LIST PRICE	CTN QTY
RECESSED MOUNT			
14"	GVHR14R	CALL FOR PRICING	N/A
18"	GVHR18R		
24"	GVHR24R		
30"	GVHR36R		
FLUSH MOUNT			
14"	GVHR14F	CALL FOR PRICING	N/A
18"	GVHR18F		
24"	GVHR24F		
30"	GVHR30F		

*** OTHER SIZES AVAILABLE, CALL FOR PRICING ***



GVHR

SOFFIT & FOUNDATION VENTS

CONTINUOUS SOFFIT VENT

SIZE	MATERIAL	MODEL # (10' LENGTHS)	LIST PRICE (per L/Ft)	CTN QTY
4"	GALVANIZED	CSV4	2.89	200 / L/Ft
	BROWN	CSV4BR	2.89	
	WHITE	CSV4WH	3.28	
	ALUMINIUM	CSV4A	3.52	
	BLACK	CSV4BK	3.28	
6"	GALVANIZED	CSV6	3.41	100 / L/Ft
	BROWN	CSV6BR	3.78	
	WHITE	CSV6WH	3.78	
	ALUMINIUM	CSV6A	4.28	
	BLACK	CSV6BK	3.78	
8"	GALVANIZED	CSV8	3.91	100 / L/Ft
	BROWN	CSV8BR	4.28	
	WHITE	CSV8WH	4.28	
	ALUMINIUM	CSV8A	4.91	
	BLACK	CSV8BK	4.28	

*** ALL CSV MADE IN 10" PIECES ***



CSV

LOUVERED FOUNDATION & SOFFIT VENT

SIZE	GALVANIZED	LIST PRICE	ALUMINIUM	LIST PRICE	CTN QTY
with DAMPER					
16" x 4"	VD416	5.67	VD416A	6.80	50
16" x 6"	VD616	6.58	VD616A	7.43	
16" x 8"	VD816	6.93	VD816A	8.19	
with SCREEN					
16" x 4"	VS416	4.67	VS416A	5.30	100
16" x 6"	VS616	5.41	VS616A	6.04	
16" x 8"	VS816	5.67	VS816A	6.17	
with DAMPER & SCREEN					
16" x 4"	VDS416	7.56	VDS416A	9.07	50
16" x 6"	VDS616	8.44	VDS616A	9.70	
16" x 8"	VDS816	9.07	VDS816A	10.58	
without DAMPER & SCREEN					
16" x 4"	V416	2.52	V416A	2.89	100
16" x 6"	V616	3.28	V616A	3.78	
16" x 8"	V816	3.52	V816A	4.04	

*** ALSO AVAILABLE IN PAINTED BLACK, BROWN, WHITE - CALL FOR PRICING ***



VD

SOFFIT & FOUNDATION VENTS

UNDER EAVE VENT

SIZE	COLOR	MODEL #	LIST PRICE	CTN QTY
4"	WHITE	UEVN4WH	7.52	96
		UEV4WH	6.74	
	BEIGE	UEVN4BG	7.52	
		UEV4BG	6.74	
	BROWN	UEVN4BR	7.52	
		UEV4BR	6.74	
6"	WHITE	UEV6WH	9.36	
	BROWN	UEV6BR	9.36	
	BEIGE	UEV6BG	9.36	
3" - 4" REDUCER	WHITE	UEV34RWH	3.50	N/A



HVAC DAMPERS

MOTORIZED DAMPER - POWER OPEN or CLOSE with SPRING RETURN

SIZE	NORMALLY OPEN	NORMALLY CLOSED	LIST PRICE	CTN QTY
4"	ADO424	ADC424	95.10	1
	ADO424ES	ADC424ES	101.36	
	ADO4120	ADC4120	103.67	
	ADO4120ES	ADC4120ES	106.52	
5"	ADO524	ADC524	95.10	1
	ADO524ES	ADC524ES	101.36	
	ADO5120	ADC5120	103.67	
	ADO5120ES	ADC5120ES	106.52	
6"	ADO624	ADC624	95.10	1
	ADO624ES	ADC624ES	101.50	
	ADO6120	ADC6120	103.67	
	ADO6120ES	ADC6120ES	106.52	
7"	ADO724	ADC724	104.62	1
	ADO724ES	ADC724ES	111.02	
	ADO7120	ADC7120	110.34	
	ADO7120ES	ADC7120 ES	119.58	
8"	ADO824	ADC824	104.62	1
	ADO824ES	ADC824ES	111.02	
	ADO8120	ADC8120	110.34	
	ADO8120ES	ADC8120ES	119.58	
10"	ADO1024	ADC1024	111.02	1
	ADO1024ES	ADC1024ES	117.28	
	ADO10120	ADC10120	116.73	
	ADO10120ES	ADC10120ES	125.84	
12"	ADO1224	ADC1224	120.40	1
	ADO1224ES	ADC1224ES	126.80	
	ADO12120	ADC12120	129.11	
	ADO12120ES	ADC12120ES	135.37	
14"	ADO1424	ADC1424	123.67	1
	ADO1424ES	ADC1424ES	130.07	
	ADO14120	ADC14120	132.24	
	ADO14120ES	ADC14120ES	138.63	

*** ES = END SWITCH, 24 = 24 VOLT, 120 = 120 VOLT ***



ADO



ADC

HVAC DAMPERS

POWER OPEN & POWER CLOSE DAMPER

SIZE	DAMPER MODEL #	VOLTAGE	LIST PRICE	CTN QTY
4"	POC4	24 volt	161.99	1
6"	POC6		168.08	
7"	POC7		175.52	
8"	POC8		184.57	
9"	POC9		192.11	
10"	POC10		200.48	
12"	POC12		210.56	
14"	POC14		220.64	
16"	POC16		230.71	
18"	POC18		240.79	
20"	POC20		250.87	

*** ALSO AVAILABLE WITH 120 VOLT MOTOR ***



POC

BACK DRAFT DAMPERS

SIZE	DAMPER MODEL #	LIST PRICE	CTN QTY
4"	BD4	14.96	12
5"	BD5	15.37	
6"	BD6	15.37	
7"	BD7	17.96	
8"	BD8	17.96	
9"	BD9	25.31	
10"	BD10	25.31	
12"	BD12	29.93	
14"	BD14	43.39	2
16"	BD16	58.90	
18"	BD18	82.72	
20"	BD20	105.30	

*** AVAILABLE WITH SINGLE END CRIMP or DOUBLE END CRIMP ***



BD

HVAC DAMPERS

PRESSURE RELIEF DAMPER ROUND & RECTANGULAR

SIZE	MODEL #	LIST PRICE	CTN QTY	SIZE	MODEL #	LIST PRICE	CTN QTY	
ROUND MODEL				RECTANGULAR MODEL				
6"	PRD6	59.99	1	12" x 8"	DD 128	111.36	1	
7"	PRD7	64.49		18" x 8"	DD188	114.00		
8"	PRD8	69.99		20" x 10"	DD2010	135.68		
10"	PRD10	73.99		20" x 12"	DD2012	138.20		
12"	PRD12	81.65		N/A		N/A		N/A
14"	PRD14	101.48						
16"	PRD16	122.47						
18"	PRD18	137.64						

*** OTHER SIZES AVAILABLE, CALL FOR PRICING ***



PRD

MULTI BLADE DAMPER

SIZE (W" x H")	MODEL # (POWER OPEN, SPRING CLOSE)	VOLTAGE	LIST PRICE	CTN QTY
6" x 6"	MB66	PLEASE SPECIFY 24 VOLT or 120 VOLT (24V, 120V), BOTTOM or SIDE MOTOR MOUNT (BM, SD). POSC = POWER OPEN, SPRING CLOSE PCSO = POWER CLOSE, SPRING OPEN	194.41	1
8" x 6"	MB86		200.28	
8" x 8"	MB88		217.60	
10" x 8"	MB108		223.84	
10" x 10"	MB1010		230.07	
12" x 8"	MB128		230.07	
12" x 10"	MB1210		242.50	
12" x 12"	MB1212		248.72	
14" x 8"	MB148		236.26	
14" x 10"	MB1410		248.72	
14" x 12"	MB1412		264.26	
14" x 14"	MB1414		270.45	
16" x 8"	MB168		242.50	
16" x 10"	MB1610		258.03	
16" x 12"	MB1612		270.45	
16" x 14"	MB1614		279.81	
20" x 8"	MB208		254.92	
20" x 12"	MB2012		285.99	
24" x 8"	MB248		267.38	
24" x 12"	MB2412		301.27	
24" x 14"	MB2414		316.65	

*** OTHER SIZES AVAILABLE, CALL FOR PRICING ***



DD



MB

CHIMNEY CAPS

WIND DIRECTIONAL CAP

SIZE	MODEL #	LIST PRICE	CTN QTY	SIZE	MODEL #	LIST PRICE	CTN QTY
GALVANIZED				STAINLESS STEEL			
5"	WDC5	37.03	1	5"	WDC5SS	66.39	1
6"	WDC6	37.03		6"	WDC6SS	66.39	
7"	WDC7	46.61		7"	WDC7SS	83.01	
8"	WDC8	46.61		8"	WDC8SS	83.01	
9"	WDC9	58.20		9"	WDC9SS	101.96	
10"	WDC10	58.20		10"	WDC10SS	101.96	
12"	WDC12	79.36		12"	WDC12SS	184.80	
14"	WDC14	125.71		14"	WDC14SS	243.00	



WDC

WIND CAP ADAPTER - STAINLESS STEEL

SIZE	MODEL #	LIST PRICE	CTN QTY
5"	WCA5SS	27.07	1
6"	WCA6SS	27.07	
7"	WCA7SS	28.29	
8"	WCA8SS	28.29	
9"	WCA8SS	29.39	
10"	WCA10SS	29.39	
12"	WCA12SS	33.47	
14"	WCA14SS	38.58	



WCA

SQUARE TILE CAP ADAPTOR

SIZE	MODEL #	LIST PRICE	CTN QTY	SIZE	MODEL #	LIST PRICE	CTN QTY
GALVANIZED				STAINLESS STEEL			
8" x 8"	ATA88	18.40	1	8" x 8"	ATA88SS	32.13	1
8" x 12"	ATA812	19.27		8" x 12"	ATA812SS	33.51	
12" x 12"	ATA1212	24.19		12" x 12"	ATA1212SS	40.44	
12" x 16"	ATA1216	25.57		12" x 16"	ATA1216SS	44.59	
16" x 16"	ATA1616	32.37		16" x 16"	ATA1616SS	66.89	

*** CALL TO ORDER, SPECIAL MEASUREMENTS REQUIRED, OTHER SIZES AVAILABLE ***



ATA

CHIMNEY CAPS

VACUUM CAP

SIZE	MODEL #	LIST PRICE	CTN QTY	SIZE	MODEL #	LIST PRICE	CTN QTY
GALVANIZED				ALUMINIUM			
3"	VC3	7.56	12	3"	VC3A	8.56	12
4"	VC4	8.56		4"	VC4A	9.07	
5"	VC5	9.45		5"	VC5A	9.95	
6"	VC6	12.34	6	6"	VC6A	14.23	6
7"	VC7	13.86		7"	VC7A	15.88	
8"	VC8	15.88		8"	VC8A	18.24	
9"	VC9	18.40	4	9"	VC9A	20.53	4
10"	VC10	23.18		10"	VC10A	24.31	
12"	VC12	29.73		12"	VC12A	34.14	
14"	VC14	57.69	1	N/A	N/A	N/A	N/A
16"	VC16	82.26		N/A	N/A	N/A	N/A
STAINLESS STEEL				COPPER			
3"	VC3SS	28.47	12	3"	VC3CU	CALL FOR PRICING	1
4"	VC4SS	30.23		4"	VC4CU		
5"	VC5SS	32.12		5"	VC5CU		
6"	VC6SS	35.02	6	6"	VC6CU		
7"	VC7SS	37.92		7"	VC7CU		
8"	VC8SS	48.76		8"	VC8CU		
9"	VC9SS	59.97	4	9"	VC9CU		
10"	VC10SS	81.75		10"	VC10CU		
12"	VC12SS	107.33		12"	VC12CU		



VC

SQUARE BASE VACUUM CAP

SIZE	MODEL #	LIST PRICE	CTN QTY	SIZE	MODEL #	LIST PRICE	CTN QTY
GALVANIZED				COPPER			
8" x 8"	SQ88	44.98	1	8" x 8"	SQ88CU	CALL FOR PRICING	1
8" x 12"	SQ812	52.78		8" x 12"	SQ812CU		
8" x 16"	SQ816	69.91		8" x 16"	SQ816CU		
12" x 12"	SQ1212	101.28		12" x 12"	SQ1212CU		
12" x 16"	SQ1216	118.20		12" x 16"	SQ1216CU		
STAINLESS STEEL				STAINLESS STEEL			
8" x 8"	SQ88SS	114.70	1	12" x 12"	SQ1212SS	252.50	1
8" x 12"	SQ812SS	129.59		12" x 16"	SQ1216SS	295.50	
8" x 16"	SQ816SS	198.42					



SQ

CHIMNEY CAPS

CONE TOP CAP

SIZE	MODEL #	LIST PRICE	CTN QTY	SIZE	MODEL #	LIST PRICE	CTN QTY	
GALVANIZED				STAINLESS STEEL				
3"	CT3	7.34	12	3"	CT3SS	13.60	12	
4"	CT4	8.02		4"	CT4SS	14.69		
5"	CT5	8.70		5"	CT5SS	17.15		
6"	CT6	9.52		6"	CT6SS	24.09		
7"	CT7	10.34	4	7"	CT7SS	26.53	4	
8"	CT8	11.97		8"	CT8SS	27.49		
9"	CT9	13.60	3	9"	CT9SS	27.89	3	
10"	CT10	14.42		10"	CT10SS	31.29		
12"	CT12	21.23	2	12"	CT12SS	46.66	2	
14"	CT14	33.73		N/A	N/A	N/A		N/A
16"	CT16	35.51		N/A	N/A	N/A		N/A



CT

COPPER			
3"	CT3CU	CALL FOR PRICING	1
4"	CT4CU		
5"	CT5CU		
6"	CT6CU		
7"	CT7CU		
8"	CT8CU		
9"	CT9CU		
10"	CT10CU		
12"	CT12CU		

*** ALSO AVAILABLE WITH SCREEN, CALL FOR PRICING ***

UNIVERSAL CAP

SIZE	MODEL #	LIST PRICE	CTN QTY	SIZE	MODEL #	LIST PRICE	CTN QTY
GALVANIZED				STAINLESS STEEL			
6"	UC6	33.13	N/A	6"	UC6SS	45.72	N/A
7"	UC7	39.05		7"	UC7SS	54.67	
8"	UC8	39.05		8"	UC8SS	54.67	
COPPER							
6"	UC6CU	CALL FOR PRICING	NEW				
7"	UC7CU						
8"	UC8CU						



UC

PIPE FLASHING

ADJUSTABLE PIPE FLASHING - STANDARD PITCH (0/12 - 6/12)

SIZE	MODEL #	LIST PRICE	SIZE	DOUBLE WALL PIPE	LIST PRICE	CTN QTY
1"	G1	7.05	N/A	N/A	N/A	N/A
2"	G2	8.29	N/A	N/A	N/A	
3"	G3	10.48	3 5/8"	GB3	11.70	
4"	G4	11.70	4 5/8"	GB4	13.88	
5"	G5	13.88	5 5/8"	GB5	15.65	
6"	G6	15.65	6 5/8"	GB6	15.65	
7"	G7	19.05	7 5/8"	GB7	19.32	
8"	G8	19.32	8 5/8"	GB8	23.40	
9"	G9	21.67	9 5/8"	GB9	31.34	
10"	G10	21.67	11"	GB10	31.34	
12"	G12	31.84	13"	GB12	49.45	
14"	G14	49.45	15"	GB14	73.02	
16"	G16	70.02	N/A	N/A	N/A	
18"	G18	88.88				
20"	G20	107.33				

*** OTHER SIZES AND CUSTOM OPTIONS AVAILABLE ***



G

ADJUSTABLE PIPE FLASHING - STEEP PITCH (7/12 - 12/12)

SIZE	MODEL #	LIST PRICE	SIZE	DOUBLE WALL PIPE	LIST PRICE	CTN QTY
2"	GH2	12.21	N/A	N/A	N/A	N/A
3"	GH3	12.21	3 5/8"	GHB3	13.20	
4"	GH4	13.61	4 5/8"	GHB4	14.69	
5"	GH5	16.12	5 5/8"	GHB5	17.41	
6"	GH6	18.14	6 5/8"	GHB6	19.59	
7"	GH7	21.92	7 5/8"	GHB7	23.67	
8"	GH8	22.30	8 5/8"	GHB8	24.09	
9"	GH9	27.09	9 5/8"	GHB9	29.25	
10"	GH10	30.87	11"	GHB10	42.96	
12"	GH12	49.50	13"	GHB12	49.50	
14"	GH14	49.50	15"	GHB14	61.88	

*** OTHER SIZES AND CUSTOM OPTIONS AVAILABLE ***



GH

PIPE FLASHING

FLAT PITCH PIPE FLASHING

SIZE	MODEL #	LIST PRICE	CTN QTY	SIZE	MODEL #	LIST PRICE	CTN QTY
STANDARD				12" TALL			
1"	N/A	N/A	N/A	1"	TFP1	8.96	N/A
2"				TFP2	9.66		
3"	FP3	8.70		3"	TFP3	12.52	
4"	FP4	10.34		4"	TFP4	12.52	
5"	FP5	11.43		5"	TFP5	13.88	
6"	FP6	13.20		6"	TFP6	13.88	
7"	FP7	14.69		7"	TFP7	17.55	
8"	FP8	16.05		8"	TFP8	17.55	
9"	FP9	19.87		9"	TFP9	28.03	
10"	FP10	21.36		10"	TFP10	28.03	
12"	FP12	25.45		12"	TFP12	41.36	
14"	FP14	39.45		14"	TFP14	51.02	
16"	FP16	57.69		16"	TFP16	63.99	
18"	FP18	73.19		18"	TFP18	76.84	



FP



TFP



CF

CRICKET FLASHING

SIZE	MODEL #	LIST PRICE	CTN QTY
1 1/2" & 2"	CF2	30.21	8
3" & 4"	CF4	33.33	

PIPE FLASHING with NEOPRENE COLLAR

SIZE	MODEL #	LIST PRICE	CTN QTY	COLOR	MODEL #	LIST PRICE	CTN QTY
GALVANIZED BASE with NEOPRENE COLLAR				NEOPRENE COLLAR ADJUSTABLE FROM 3" - 4"			
1"	GB1N	6.76	N/A	GALVANIZED	GB34N	11.91	N/A
2"	GB2N	6.76		BLACK		15.42	
3"	GB3N	7.63		BROWN		15.42	
4"	GB4N	10.46		GRAY		15.42	
				NEOPRENE COLLAR ADJUSTABLE FROM 3" - 1"			
				GALVANIZED	GB31N	9.15	N/A
				BLACK		12.66	
				BROWN		12.66	
				GRAY		12.66	



GBN



GB31N

HVAC ACCESSORIES

FLUE CAP & PLUG

SIZE	CAP MODEL #	PLUG MODEL #	LIST PRICE	CAP MODEL #	PLUG MODEL #	LIST PRICE	CTN QTY
	GALVANIZED			ALUMINIUM			
3"	FC3	GP3	4.28	FC3A	GP3A	4.67	24
4"	FC4	GP4	4.28	FC4A	GP4A	4.67	
5"	FC5	GP5	4.28	FC5A	GP5A	5.30	
6"	FC6	GP6	4.28	FC6A	GP6A	5.30	
7"	FC7	GP7	4.67	FC7A	GP7A	6.43	
8"	FC8	GP8	5.30	FC8A	GP8A	6.80	
9"	FC9	GP9	5.93	FC9A	GP9A	8.56	12
10"	FC10	GP10	6.56	FC10A	GP10A	11.84	
12"	FC12	GP12	7.19	FC12A	GP12A	13.64	
14"	FC14	GP14	9.95	N/A	N/A	N/A	
16"	FC16	GP16	17.89	N/A	N/A	N/A	N/A

*** OTHER SIZES AVAILABLE, CALL FOR PRICING ***



FC



GP

TAPERED REDUCER

SIZE	MODEL #	LIST PRICE	CTN QTY
	GALVANIZED		
4" x ?	TR4 ?	6.40	9
5" x ?	TR 5 ?	6.40	
6" x ?	TR6 ?	6.53	
7" x ?	TR7 ?	6.53	
8" x ?	TR8 ?	6.53	
9" x ?	TR9 ?	8.57	
10" x ?	TR10 ?	8.57	12
12" x ?	TR12 ?	13.33	
14" x ?	TR14 ?	14.15	
16" x ?	TR16 ?	17.55	
18" x ?	TR18 ?	21.23	
20" x ?	TR20 ?	23.80	
22" x ?	TR22 ?	30.47	1
24" x ?	TR24 ?	31.12	1

*** OTHER SIZES AVAILABLE, CALL FOR PRICING - ? REPRESENTS SIZE ***



TR

HVAC ACCESSORIES

INCREASER REDUCER

SIZE	MODEL #	LIST PRICE	CTN QTY	SIZE	MODEL #	LIST PRICE	CTN QTY
GALVANIZED				ALUMINIUM			
4" x ?	IR4 ?	7.48	24	4" x ?	IR4 ?A	7.89	24
5" x ?	IR5 ?	7.48		5" x ?	IR5 ?A	7.89	
6" x ?	IR6 ?	7.48		6" x ?	IR6 ?A	7.89	
7" x ?	IR7 ?	8.30		7" x ?	IR7 ?A	8.30	
8" x ?	IR8 ?	9.25		8" x ?	IR8 ?A	9.25	
9" x ?	IR9 ?	11.43		9" x ?	IR9 ?A	11.43	
10" x ?	IR10 ?	12.25	12	10" x ?	IR10 ?A	14.49	12
12" x ?	IR12 ?	12.34		12" x ?	1R12 ?A	19.02	

*** OTHER SIZES AVAILABLE, CALL FOR PRICING - ? REPRESENTS SIZE ***



IR

PLUG REDUCER

SIZE	MODEL #	LIST PRICE	CTN QTY
GALVANIZED			
4" x ?	PR4 ?	6.17	24
5" x ?	PR5 ?	6.17	
6" x ?	PR6 ?	6.30	
7" x ?	PR7 ?	8.95	
8" x ?	PR8 ?	9.07	
9" x ?	PR9 ?	12.22	
10" x ?	PR10 ?	13.73	12
12" x ?	PR12 ?	17.13	
14" x ?	PR14 ?	20.03	

*** OTHER SIZES AVAILABLE, CALL FOR PRICING - ? REPRESENTS SIZE ***



PR

HVAC ACCESSORIES

SQUARE TO ROUND DIFFUSER BOX

BASE SIZE	TRANSITION to ROUND SIZE	MODEL #	LIST PRICE	CTN QTY
6" x 6"	SPECIFY DUCT (ROUND) SIZE WITH ORDER 3" - 4" - 5" - 6" - 7" - 8" - 9" - 10" - 11" - 12" - 14" - 15" - 16" - 17" - 18"	SDB66	10.49	1
8" x 8"		SDB88	10.49	
10" x 8"		SDB108	11.43	
10" x 10"		SDB1010	11.85	
12" x 8"		SDB128	11.85	
12" x 10"		SDB1210	11.85	
12" x 12"		SDB1212	13.61	
14" x 8"		SDB148	14.15	
14" x 10"		SDB1410	14.15	
14" x 12"		SDB1412	15.93	
15" x 15"		SDB1515	18.23	
16" x 16"		SDB1616	22.04	
18" x 18"		SDB1818	23.53	

*** OTHER SIZES AVAILABLE, CALL FOR PRICING ***



SDB

STORM COLLAR

SIZE	MODEL #	LIST PRICE	CTN QTY	MODEL #	O/D	LIST PRICE	CTN QTY
STORM COLLAR				STORM COLLAR for B-VENT			
3"	SC3	2.89	1	SCB3	3 - 5/8"	3.78	1
4"	SC4	3.78		SCB4	4 - 5/8"	4.91	
5"	SC5	4.91		SCB5	5 - 5/8"	4.91	
6"	SC6	4.91		SCB6	6 - 5/8"	5.54	
7"	SC7	5.54		SCB7	7 - 5/8"	6.04	
8"	SC8	6.04		SCB8	8 - 5/8"	6.80	
9"	SC9	6.80		SCB9	9 - 5/8"	8.06	
10"	SC10	8.06		SCB10	11"	9.32	
12"	SC12	9.32		SCB12	13"	13.99	
14"	SC14	13.99		SCB14	15"	20.97	
16"	SC16	20.96		SCB16	17"	23.61	
18"	SC18	23.61		SCB18	19"	26.00	

*** OTHER SIZES AVAILABLE, CALL FOR PRICING. O/D = OUTSIDE DIAMETER ***



SC

HVAC ACCESSORIES

VENT COLLAR

SIZE	MODEL #	LIST PRICE	CTN QTY	SIZE	MODEL #	LIST PRICE	CTN QTY
GALVANIZED				ALUMINIUM			
3"	WVC3	2.90	N/A	3"	WVC3A	2.90	N/A
4"	WVC4	3.13		4"	WVC4A	3.13	
5"	WVC5	3.36		5"	WVC5A	3.36	
6"	WVC6	3.36		6"	WVC6A	3.38	
7"	WVC7	4.23		7"	WVC7A	4.23	
8"	WVC8	5.02		8"	WVC8A	5.02	
9"	WVC9	5.70		9"	WVC9A	5.70	
10"	WVC10	6.66		10"	WVC10A	6.66	
12"	WVC12	7.71		12"	WVC12A	7.71	

*** OTHER SIZES AVAILABLE, CALL FOR PRICING ***



WVC

NAIL PLATES

SIZE	MODEL #	BDL. QTY	LIST PRICE	CTN QTY
2" x 18"	NP218	50	2.43	N/A
2" x 24"	NP224	25	2.97	



NP

VENT SCREEN

SIZE	MATERIAL	MODEL #	LIST PRICE	CTN QTY
6" x 100'	ALUMINIUM PERMA KOTE	VM6	31.07	4



VM

HVAC ACCESSORIES

FURNACE FILTER RACK

SIZE	MODEL #	LIST PRICE	CTN QTY
14" x 20"	FR1420	42.40	1
14" x 25"	FR1425	43.67	
16" x 20"	FR1620	44.63	
16" x 25"	FR1625	48.92	
18" x 20"	FR1820	49.05	
18" x 25"	FR1825	50.10	
20" x 20"	FR2020	49.16	
20" x 25"	FR2025	50.15	



FR

STUCCO RING for WALL VENTS

SIZE	MODEL #	LIST PRICE	CTN QTY
3"	SR3	3.97	12
4"	SR4	3.97	
5"	SR5	3.97	
6"	SR6	3.97	
7"	SR7	4.55	
8"	SR8	4.55	
10"	SR10	5.13	
12"	SR12	5.13	



SR

JOIST POCKET LINER

JOIST POCKET LINER

SIZE	MODEL #	LIST PRICE PER UNIT	PACKING	CTN QTY & SHIPPING INFO
For 1 1/2" and 1 3/4" x 9 1/2" joists	JPL2-9	1.46 per unit	1 Pallet Minimum	30 units per box, 32 boxes per pallet, 1 pallet JPL 2-9 = approx 24 average size home installations FREE SHIPPING
		1.75 per unit	8 Box Minimum	
		2.27 per unit	1 Box Minimum	
		3.02 per unit	Suggested Retail	
For 1 1/2", 1 3/4", 2", 2 5/16" and 2 1/2" x 9 1/2" joists	JPL25-9	1.89 per unit	1 Pallet Minimum	30 units per box, 18 boxes per pallet, 1 pallet JPL 25-9 = approx 14 average size home installations FREE SHIPPING
		2.27 per unit	8 Box Minimum	
		2.72 pr unit	1 Box Minimum	
		6.61 per unit	Suggested Retail	
For 1 1/2" and 1 3/4" x 11 7/8" joists	JPL2-11	1.78 per unit	1 Pallet Minimum	30 units per box, 18 boxes per pallet, 1 pallet JPL 2-11 = approx 14 average size home installations FREE SHIPPING
		2.13 per unit	8 Box Minimum	
		2.56 per unit	1 Box Minimum	
		3.40 per unit	Suggested Retail	
For 1 1/2", 1 3/4", 2", 2 5/16" and 2 1/2" x 11 7/8" joists	JPL25-11	1.89 per unit	1 Pallet Minimum	30 units per box, 18 boxes per pallet, 1 pallet JPL 25-11 = approx 14 average size home installations FREE SHIPPING
		2.27 per unit	8 Box Minimum	
		2.72 per unit	1 Box Minimum	
		3.61 per unit	Suggested Retail	
For skewed, double and triple joists; Beams; Girders x 9 1/2" & 7 1/2" joists	JPL55-9	2.48 per unit	1 Pallet Minimum	10 units per box, 18 boxes per pallet FREE SHIPPING
		2.97 per unit	8 Box Minimum	
		3.56 per unit	1 Box Minimum	
		4.73 per unit	Suggested Retail	

*** **Shipping:** Freight to be arranged by FAMCO unless otherwise noted. Pallet quantity orders will ship LTL free of charge, box quantities will ship FedEx or UPS and all applicable shipping fees will be added at time of invoicing.
Delivery Time: 5-10 business days from date of order to date of delivery based on freight carrier availability ***



The Joist Pocket Liner® pocket is the newest approach in floor construction.

The Joist Pocket Liner® pocket creates a pocket in concrete foundation walls to support the end of an engineered wood I-joist or a conventional wood floor joist. The result is a new standard in floor strength, performance, and silence.

The Joist Pocket Liner® is a high-density, polyethylene component used to form pockets



(block outs) in foundation walls, so that the ends of each floor joist can be supported directly by the foundation wall.

This system provides labor and material savings over conventional methods of joist support.

JPLs are made in different depths and widths, to accommodate various sizes of I-joists and dimensional wood joists.



COPPER PRODUCTS

COPPER BATH & KITCHEN EXHAUST VENT

SIZE	MODEL #	LIST PRICE	CTN QTY	SIZE	MODEL #	LIST PRICE	CTN QTY
without EXTENSION				with BOTTOM EXTENSION			
4"	BK4CU	CALL FOR PRICING	1	4"	BK4XCU	CALL FOR PRICING	1
6"	BK6CU			6"	BK6XCU		
8"	BK8CU			8"	BK9XCU		
10"	BK10CU			10"	BK10XCU		



BKCU

COPPER J VENT

SIZE	MODEL #	LIST PRICE	CTN QTY
3"	JV3CU	CALL FOR PRICING	1
4"	JV4CU		
5"	JV5CU		
6"	JV6CU		
7"	JV7CU		
8"	JV8CU		
10"	JV10CU		
12"	JV12CU		



JVCU

COPPER ROOF VENT

NET FREE AREA	MODEL #	LIST PRICE	CTN QTY
38 Sq. In, NET FREE AREA	JVO38CU	CALL FOR PRICING	1



JVO38U

COPPER CONE TOP CAP

SIZE	MODEL #	LIST PRICE	CTN QTY	SIZE	MODEL #	LIST PRICE	CTN QTY
without SCREEN				with SCREEN			
3"	CT3CU	CALL FOR PRICING	1	3"	CT3SCU	CALL FOR PRICING	1
4"	CT4CU			4"	CT4SCU		
5"	CT5CU			5"	CT5SCU		
6"	CT6CU			6"	CT6SCU		
7"	CT7CU			7"	CT7SCU		
8"	CT8CU			8"	CT8SCU		
9"	CT9CU			9"	CT9SCU		
10"	CT10CU			10"	CT10SCU		
12"	CT12CU			12"	CT12SCU		



CTCU

COPPER PRODUCTS

COPPER UNIVERSAL CHIMNEY CAP

SIZE	MODEL #	LIST PRICE	CTN QTY
6"	UC6CU	CALL FOR PRICING	1
7"	UC7CU		
8"	UC8CU		



UCCU

COPPER VACUUM CAP

SIZE	MODEL #	LIST PRICE	CTN QTY	SIZE	MODEL #	LIST PRICE	CTN QTY
SQUARE BASE				ROUND BASE			
8" x 8"	SQ88CU	CALL FOR PRICING	N/A	3"	VC3CU	CALL FOR PRICING	N/A
8" x 12"	SQ812CU						
8" x 16"	SQ816CU						
12" x 12"	SQ1212CU						
12" x 16"	SQ1216CU						
				4"	VC4CU		
				5"	VC5CU		
				6"	VC6CU		
				7"	VC7CU		
				8"	VC8CU		
				10"	VC10CU		
				12"	VC12CU		



SQCU



VCCU

COPPER LOUVERED GABLE VENT

SIZE	MODEL #	LIST PRICE	CTN QTY
WIDE x TALL	AVAILABLE IN RECESSED MOUNT - FLUSH MOUNT & FLANGE ON BACK		
12" x 12"	GV1212CU	CALL FOR PRICING	N/A
12" x 18"	GV1218CU		
14" x 18"	GV1418CU		
14" x 24"	GV1424CU		



GVCU

*** OTHER SIZES AVAILABLE, CALL FOR PRICING ***

COPPER PRODUCTS

COPPER RECTANGULAR WALL VENTS

SIZE	MODEL #	LIST PRICE	CTN QTY
3 1/4" x 10"	WV310CU - DAMPER ONLY	CALL FOR PRICING	N/A
3 1/4" x 10"	WVS310CU - DAMPER & SCREEN		



WV310CU

COPPER HOODED WALL VENTS

SIZE	with DAMPER	with SCREEN	LIST PRICE	CTN QTY	DAMPER & SCREEN	LIST PRICE	CTN QTY
3"	DWV3CU	SWV3CU	CALL FOR PRICING	N/A	SDWV3CU	CALL FOR PRICING	N/A
4"	DWV4CU	SWV4CU			SDWV4CU		
5"	DWV5CU	SWV5CU			SDWV5CU		
6"	DWV6CU	SWV6CU			SDWV6CU		
7"	DWV7CU	SWV7CU			SDWV7CU		
8"	DWV8CU	SWV8CU			SDWV8CU		
10"	DWV10CU	SWV10CU			SDWV10CU		
12"	DWV12CU	SWV12CU			SDWV12CU		
14"	DWV14VCU	SWV12CU			SDWV14CU		



WVCU



FRESH AIR MANUFACTURING COMPANY

649 N. Ralstin St., Meridian, Idaho 83642

Tel: 208-884-8931 • Toll Free: 800-234-1903

Fax: 208-884-8943 • E-mail: famco@famcomfg.com

<http://www.famcomfg.com>

(Most drawings and specification sheets can be found on our web site.)

