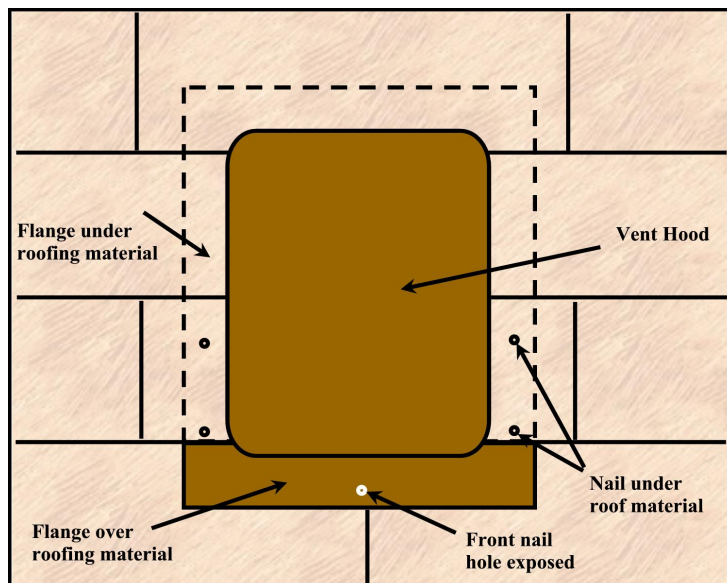
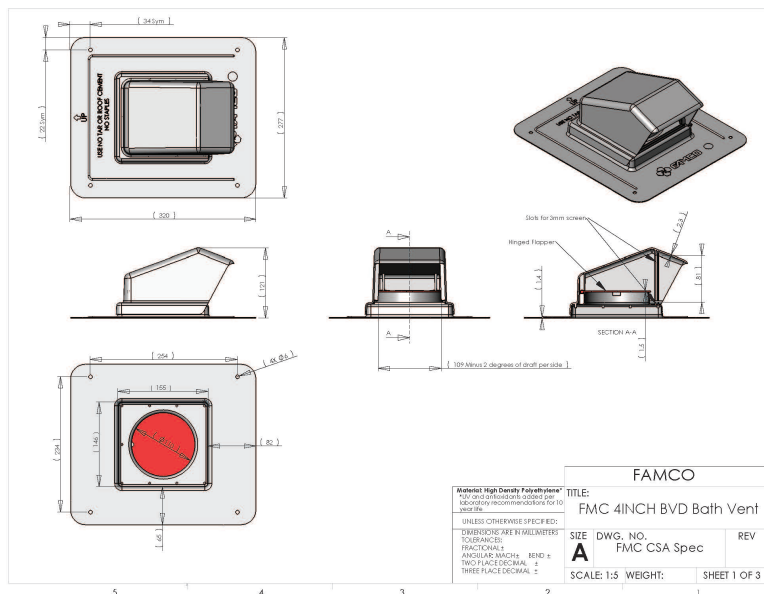


BVD4 INSTALLATION INSTRUCTIONS



Picture may not represent actual nail hole locations.

- Mark a 6" x 6 ½" outline to indicate where the vent opening will be. The top horizontal line should be at the bottom edge of a shingle line. For the most efficient exhausting, place vent the shortest distance allowable to exhaust source. **DO NOT PLACE VENT OPENING OVER A TRUSS.**
- Cut out the opening that you just marked. With a prybar remove the roofing nails from the top row and two sides of shingles so the vent can be slipped under the shingles.
- Slide the flange of the vent under the shingles with the arrow pointing up. Nail the vent into place using the holes provided. **DO NOT USE STAPLES. ONLY NAIL WHERE HOLES ARE PROVIDED.**
- Seal all seams and nails with a non-petroleum-based sealant, such as silicone. **DO NOT USE TAR OR PETROLEUM BASED CAULK OR ADHESIVE ON THIS PRODUCT.**